



NOON
5005

ANNUAL REPORT

When Mr. Oishei established the Julia R. and Estelle L. Foundation, Inc., now The John R. Oishei Foundation, he left behind a fortune that we have been entrusted to manage and carry forward. Mr. Oishei's devotion to Buffalo encourages us to continue his legacy and take shared responsibility for the future of our community. Our Board of Directors and staff embrace this responsibility wholeheartedly and through our work as a "catalyst for change" attempt to have a positive impact on Buffalo and the surrounding region.

As we expected, 2005 was both a year of uncertainty and a year of continued opportunity. The crisis of Erie County's fiscal meltdown reverberated throughout the community, impacting every sector in ways that are still being felt and remain indefinable. The County crisis was an undeniable reminder that we all need to approach things in a different way and take responsibility collectively for the future of our region. While unable to mend the problem, the Oishei Foundation worked throughout the year to convene groups and provide grants that would assist organizations going through unparalleled levels of

2005 Grants by Category	
Arts & Culture	\$2,623,000
Education	\$3,660,000
Health/Research	\$3,781,000
Human Services	\$3,593,000
Community	\$132,000
Total	\$13,789,000

*... played a key role in
establishing the
'Fund for the Arts'.*

uncertainty. The Foundation led through the awarding of grants, the provision of technical assistance, and through the convening of community and non profit leaders to support efforts based on responsible action with an eye to the future.

Our efforts to establish a cultural tourism initiative allowed the Oishei Foundation to play a key role, in partnership with the Community Foundation for Greater Buffalo, M&T Bank, The Baird Foundation, The Wendt Foundation, The Cameron Baird Foundation, and others in establishing the "Fund for the Arts." This pooled fund addressed the shortfall created by County cuts that significantly impacted cultural institutions. A total of \$611,000 was raised through this partnership which allowed 42 arts organizations to preserve programming throughout the year. This was an unprecedented effort of the philanthropic community to come together in a time of community need. Working collaboratively, the philanthropic community was able to do more together than any one foundation could have done on its own.

Getting our arms around the health and human services sector was not quite as easy. Throughout the year, meetings were convened between funders and County administrators to determine how best to support this sector. With hundreds of non profits offering services, it was hard to determine the impact of County cuts on the people being served. It also became apparent that significant improvements to the overall system will be required in order to improve service delivery and allow for accountability tied directly to community needs. Sessions between service providers and funders, as well as between County officials and funders, allowed for frank dialogue on how we can all partner in order to better understand community need in an effort to improve service delivery.

While much time was devoted to special meetings with various community sectors to determine the impact of the County cuts and how we might all move forward, we remained committed to our grantmaking.

... provided more grants to the human services sector than it has in the last eight years.

In 2005, the Foundation awarded 95 grants, as compared to 71 in 2004 (+ 37%), totaling \$13,789,000. The average size of a 2005 grant was \$144,000 as compared to \$193,000 in 2004. The median grant in 2005 was \$60,000 as compared to \$100,000 in 2004 and the range of grants in 2005 was \$1,000 to \$1,500,000 as compared to \$1,000 to \$1,200,000 in 2004. Visual illustrations of our grantmaking can be found throughout this report and offer a snapshot of how funds were distributed.

We believe the Foundation's grantmaking over this past year was responsive to the problems facing our community. The Foundation provided 40 grants to the human services sector totaling \$3,593,000. Both the number and the total dollars were more than in any previous year. When added to the grants in community health and medical research totaling \$3,781,000, the combined health and human services area received more than \$7 million, or over half the total grants made for the year.

Recognizing the importance of arts and culture to the overall health of the region, the Foundation provided \$2,623,000 to organizations in this field. Believing that education is of paramount importance to the growth and success of Western New York, \$3,660,000 was awarded to programs covering the full spectrum of education. Finally, \$132,000 was awarded to support civic and community efforts.

We are proud to note that total grants awarded since the Foundation's inception in 1940 now exceed \$150 million, and grants awarded during the last eight years exceed \$100 million. Also, 2005 was a banner year for grants paid — nearly \$15 million, representing the largest annual payout in the Foundation's history.

Supporting collaboration, in all forms, continued to be a common thread throughout much of our grantmaking. A significant award of \$600,000 was made to the American Red Cross to support the Family Caregiving Outreach and Education Initiative, a partnership between the Red Cross and WNED, that will address the needs of one of our most invisible yet growing populations, the

... was a willing partner with Child & Family Services, as lead agency for the Self Sufficiency Coalition.

elderly. A \$190,000 award was made to Compass House to support Project Safe Place in Erie County, a collaboration between Compass House, Tops Markets, the NFTA and many service providers working to support teens. The Albright-Knox Art Gallery received \$34,500 as the lead agency in a consortium of cultural institutions investigating opportunities for improvement in their human resource needs. A grant of \$150,000 was awarded to support continuation of the “Art and Architecture” cultural tourism marketing campaign begun by the Buffalo Niagara Convention and Visitors Bureau. We were pleased to provide a continuation grant to CEPA, Inc. in support of the ongoing effort to implement a shared administrative service plan in collaboration with Just Buffalo Literary Center and Big Orbit Gallery. Finally, \$40,000 was awarded to the 15-member Buffalo Theater Alliance to explore how they can collaborate on new technological approaches to understanding their audiences and promoting their work.

A significant collaborative effort that has been relying on volunteer goodwill for the last several years received a boost with a \$450,000 multi-year grant. The Foundation became a partner with Child & Family Services, as lead agency for the Self Sufficiency Coalition, in order to support their effort to increase the amount of Earned Income Tax Credit dollars that come to the Greater Buffalo area. With estimates of as much as \$40 million previously left on the table in 2003 by eligible recipients, it is our hope that this effort will significantly benefit needy families in the region.

New parents will benefit from a collaborative effort EPIC has launched with a \$300,000 three year grant. The *Ready, Set, Parent* program will allow EPIC and other partners to work with new parents at Women & Children’s Hospital in order to better prepare them for their new parental role in life.

Education remains a primary concern. Several grants were made that will strengthen this sector of our community. We were pleased to support the *Health Careers Enhancement* project, a new collaborative initiative by Trocaire College. A \$504,000, four year grant will allow Trocaire to launch this

... continued its support of the BISON Scholarship Fund with a grant of \$800,000 over four years. Another \$500,000 was allocated to BISSNET ...

innovative partnership among health care institutions and the College that supports entry level health care workers who are working toward a degree as a stepping stone for career advancement. A grant of \$175,000 will allow the Western New York Charter School Network, another newly created collaborative effort, to hire an executive director and work toward coordinated programming. In an effort to support low income children who hope to attend independent elementary schools, the Foundation continued its support of the BISON Scholarship Fund with a grant of \$800,000 over four years. Another \$500,000 was allocated to BISSNET, a collaborative effort between the community's independent high schools, in support of the scholarship program that benefits minority students wishing to attend these high schools. The children who live, even temporarily, at Cornerstone Manor will benefit from the \$500,000 grant made to the City Mission, as the parent organization, in support of educational programming at their new location now under construction at the corner of Michigan Street and North Avenue.

Progress was made in establishing a collaborative effort to support arts and cultural tourism throughout Western New York. Our senior program officer, Paul Hogan, continued to work with others to determine a strategy to implement Advancing Arts and Culture/Buffalo Niagara (AAC, formerly the Buffalo Niagara Cultural Tourism Initiative). In the past year, the effort has established a working board under the able leadership of Leslie Zemsky, hired Charlene Ritter Lester as its administrator, and established a strategy to support the arts across Western New York. The energy and commitment made to this effort will reap tangible results for many years.

Grants were made to several cultural institutions for innovative programming and the opportunity to grow cultural tourism in the region. The Foundation provided \$125,000 to the Albright-Knox Art Gallery for *Extreme Abstraction*, an exhibition that created a buzz throughout the community and drew 28,000 visitors over the ten week run. For the month of September 2005 alone, just under 6,000 visitors were admitted, an increase of 173% over

... granted \$1,500,000 for the rehabilitation of OLV into a comprehensive living and care facility for the elderly ...

September 2004. A grant of \$220,000 was also provided to the Roycroft Campus Corporation to launch their effort to restore and build cultural tourism around this Arts and Crafts campus in East Aurora.

Ensuring the positive growth and development of key downtown areas and neighborhoods through economic development efforts was an area of growth in our grantmaking. In alignment with our belief in the ability of arts and culture to contribute directly to economic development, the Foundation was pleased to provide a Program Related Investment of \$500,000 to Artspace Projects Inc. for the rehabilitation of the Breitweizer Building into 60 units of live-work space for Buffalo's artists. Not only is this effort supportive of our rich arts community, but it is another key element in the effort to improve midtown and relates to the growth and development of the neighboring Buffalo Niagara Medical Campus.

We were very pleased to support the Catholic Health System with a grant of \$1,500,000 for the rehabilitation of the Our Lady of Victory hospital into a comprehensive living and care facility for the elderly. We applaud this effort to find a new and creative use for a major building in the midst of one of Buffalo's struggling neighborhoods. Not only will OLV find new life, but this effort will foster a vibrancy that will be critical to the health of the Lackawanna community. Coupled with a significant investment of \$400,000 in the Buffalo & Erie County Botanical Gardens, the Oishei Foundation hopes this architectural jewel will also be a catalyst for economic development in Lackawanna.

As the Foundation strives to act as a "catalyst for change," we value the partnerships we have with those organizations that have received Oishei Foundation support. During the latter half of 2005, the Foundation elected to participate in one of the Center for Effective Philanthropy's (CEP) semi-annual Grantee Perception Reports (GPR). CEP, an independent non-profit organization which researches, evaluates, and reports on the field of

... was rated more positively than peer foundations for their helpfulness in strengthening grantees' organizations and programs ...

philanthropy, has conducted these GPRs since 2003. Information about a participating foundation is gathered from a group of its grantees, the data is compiled, and a report is issued that rates the foundation's performance both individually and in comparison with a group of its peers.

The full report runs about 115 pages and looks at over 50 items or aspects of the Foundation's practices. We achieved a response rate of 78% from Oishei's 2004 grantees, representing the opinions of 52 individual non-profit organizations, and we fared well in a number of important areas. Among them:

- Oishei is rated more positively than typical for its impact on and understanding of grantees' local communities;
- Grantees are more satisfied with their experience with the Foundation than grantees of the median foundation; and
- Participation in the Foundation's selection and evaluation processes are rated more positively than peer foundations for their helpfulness in strengthening grantees' organizations and programs.

We fared at or near median in a number of areas, including our overall impact on grantee organizations; our responsiveness, approachability, and fairness; and for the clarity with which we communicate our goals and strategies.

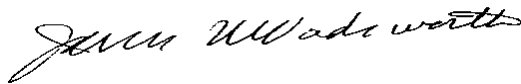
Among the suggestions for change or improvement made by our grantees are to adopt longer-term grants more geared to general support; to provide more non-financial resources and support; and to promote more 'cross-sector' work among non-profit organizations. Interestingly, a higher proportion of Oishei grants are made to programs that are less well tested (newer) than was typical, we make more 'first-time' grants to organizations, and a higher proportion of our grantees are able to sustain their programs than is typical. All of this appears to support the Foundation's policy of being a catalyst for change.

... acknowledged the many contributions that Richard D. Fors made to the Foundation ...

The information we now have regarding our grantees' perceptions will be invaluable as we move into an intensive strategic planning process for which we have retained the services of TCC Group. Throughout 2006, we will be building on the information contained in the GPR with additional input from external interviews and focus group work, evaluation of alternative strategies, and an intensive survey of the field. By the fourth quarter of 2006, we should have in hand a roadmap for the future of the Foundation.

Given the substantial contributions the Foundation has been able to make from John R. Oishei's initial vision, we believe the road ahead will continue to be immensely interesting.

Richard D. Fors retired as a member of the Board in May 2005. His keen insight and excellent judgment were invaluable during his six years on the Board. We would like to acknowledge the many contributions he made to the Foundation and our community during his tenure on the Board. We are very pleased to welcome Ruth D. Bryant as a new member of the Board. She brings exceptional new perspectives and energy to the Foundation.

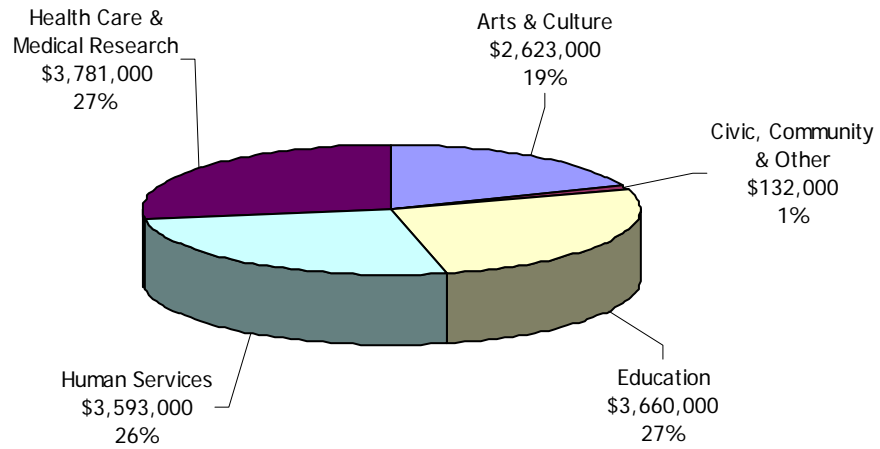


James M. Wadsworth
Chair

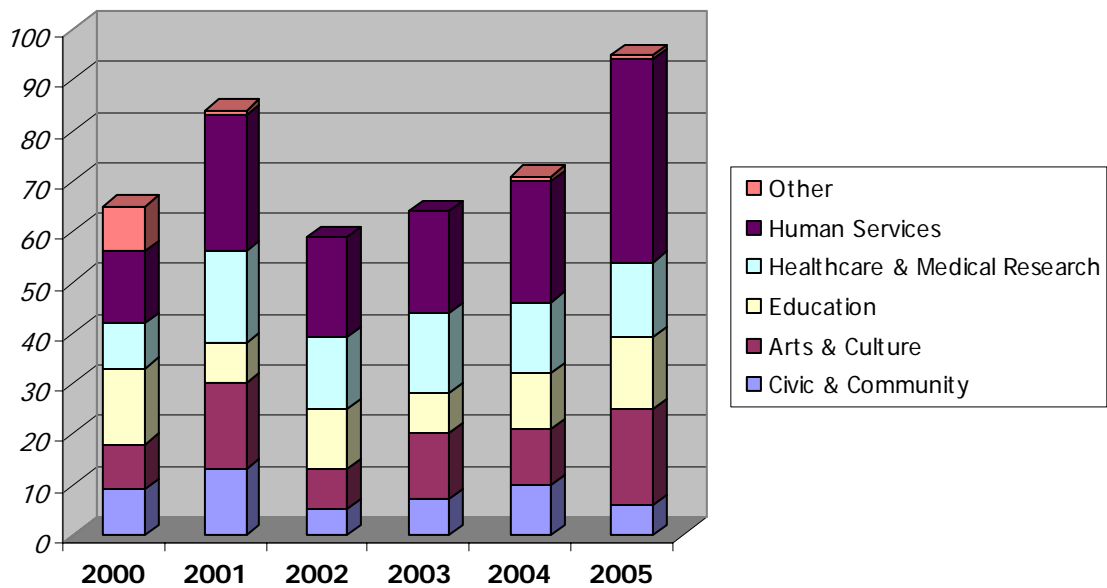


Thomas E. Baker
President

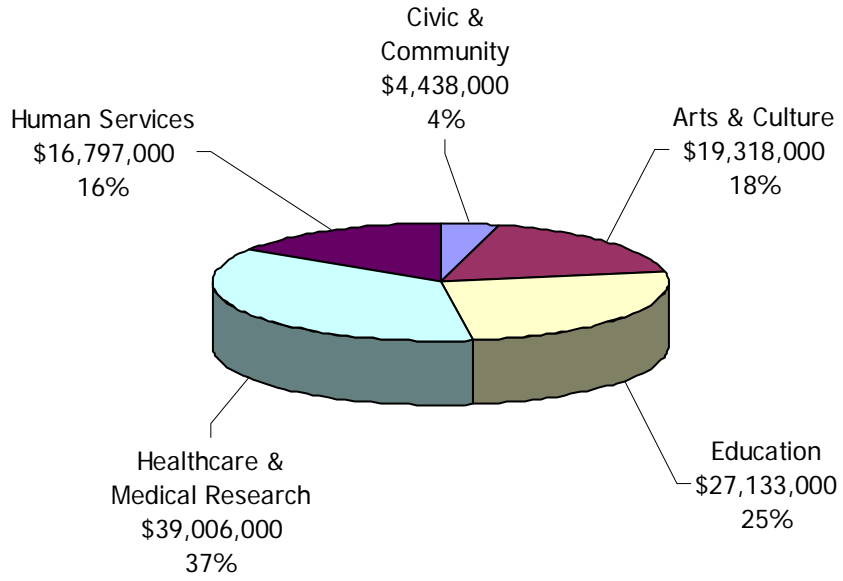
2005 Grants by Program



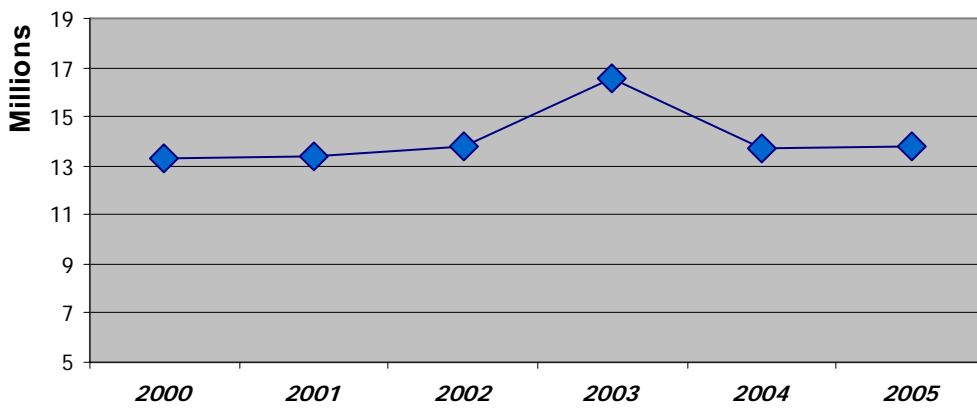
Number of Grants by Program Area, 2000 - 2005



*Grant History by Program Area
1998 - 2005*



**Annual Total of Grants Awarded
2000 - 2005**



Financial Highlights

2005 was another good year for our portfolio performance. The very diversified portfolio grew at an aggregate rate of 6.5% (12.6% in 2004). Total assets of the Foundation reached \$287.5 million, which include a number of related trusts in which the Foundation is the income beneficiary. The current value of these trusts approximates \$21.2 million at the end of 2005.

Investment revenues approximated \$16 million (\$30 million in 2004), and Foundation expenses remained constant in the two years, approximately \$1.3 million. Grants paid from the Foundation exceeded \$14 million (\$10.6 million in 2004), and the Foundation also paid grants out of its Philanthropic Fund at the Community Foundation for Greater Buffalo of approximately \$1.1 million (\$1.1 million in 2004). Total grants paid of \$15.1 million in 2005 represents the largest annual grant payout in the Foundation's history.

	<i>2005</i>	<i>2004</i>
Cash & cash equivalents	\$2,363,000	\$1,784,000
Investments	263,951,000	262,928,000
Assets in related trusts	21,181,000	21,591,000
Net Assets	\$287,495,000	\$286,303,000

Statement of Revenue, Grants and Expenses and Changes in Net Assets:

Revenues from investments, net	\$16,001,000	\$30,086,000
Distributions from related trusts	986,000	1,024,000
	16,987,000	31,110,000
Grants paid	14,112,000	10,604,000
Expenses, including excise tax	1,273,000	1,282,000
Excess of revenue over grants and expenses	1,602,000	19,224,000
Adjustment to assets in related trusts	(410,000)	(255,000)
Increase in net assets	1,192,000	18,969,000
Net assets - beginning	286,303,000	267,334,000
Net assets - ending	\$287,495,000	\$286,303,000

2005 GRANTS

Arts & Culture

Albright-Knox Art Gallery

- *support the "Extreme Abstraction" exhibit of commissioned and invited works in Summer 2005* \$125,000
- *support phase one of a multi-organizational collaborative effort regarding human resources improvement* \$34,500
- *support the continuation of the "Art and Architecture" tourism marketing campaign begun by the Buffalo Niagara Convention and Visitors Bureau* \$75,000

Artspace Projects, Inc.

support a 60-unit live/work project by providing a program related investment \$500,000

Ashford Hollow Foundation for the Visual and Performing Arts

support the Arts-in-Education Program for at risk youth through the Boys and Girls Club Evening Reporting Center Program and other institutions \$225,000 (3 years)

Buffalo & Erie County Botanical Gardens Society Inc.

support the "Buffalo Meridian" project \$400,000

Buffalo Philharmonic Orchestra

continued support of this major cultural organization \$100,000

Buffalo State College Foundation

support for the "Advancing Arts and Culture/Buffalo Niagara" (AAC) initiative \$200,000

CEPA, Inc.

support implementation of the shared administrative service plan of CEPA, Just Buffalo Literary Center, and the Big Orbit Gallery \$150,000 (3 years)

Community Foundation for Greater Buffalo

support the Fund for the Arts \$200,000

Explore & More A Children's Museum

support the "Culture for Kids" museum program \$40,000

Hallwalls, Inc. (Coalition of Arts Providers for Children (CAPC))

support a second year of coalition development and professional development of artists and teachers \$25,000

Irish Classical Theatre Company

support production of "Good" with the Jewish Repertory Theater \$50,000

Martin House Restoration Corporation	\$75,000
<i>support the continuation of the "Art and Architecture" tourism marketing campaign begun by the Buffalo Niagara Convention and Visitors Bureau</i>	
MusicalFare Theatre Co.	\$40,000
<i>support phase one of the database development project on behalf of the Buffalo Theater Alliance (BTA)</i>	
Niagara County Historical Society	\$48,700
<i>support a full time museum educator (3 years)</i>	
Niagara Experience Center, Inc.	\$75,000
<i>support the due diligence phase of the Niagara Experience Center in Niagara Falls</i>	
Roycroft Campus Corporation	\$220,000
<i>support the launch of the revitalization of the Roycroft Campus</i>	
Theatre of Youth Inc.	\$40,000
<i>support the implementation of their strategic, financial and restructuring plan</i>	
Total Arts & Culture	\$2,623,200

Civic & Community

Association of Small Foundations	\$1,000
<i>in recognition of outstanding work on behalf of the field</i>	
Buffalo Niagara Partnership Foundation	\$5,000
<i>support the Erie County Stabilization Project</i>	
Buffalo Olmsted Parks Conservancy	\$5,000
<i>support the NY Power Authority relicensing negotiations as they relate to Buffalo, Erie County and the Olmsted Conservancy</i>	
Center for Effective Philanthropy (CEP)	\$15,000
<i>support CEP Grantee Perception Report</i>	
Community Foundation for Greater Buffalo	\$100,000
<i>support for the repair and restoration of the E.M. Cotter Fire Boat (challenge grant)</i>	

Western New York Grantmakers Association

- *support the Grantmaker/Grantseeker February 2005 Annual Conference* \$2,500
- *support the WNYGA 2005 fall forum* \$3,500

Total Civic & Community \$132,000

Education

The Bison Scholarship Fund \$800,000
support low income children to attend independent elementary schools (4 years)

BISSNET \$500,000
support the eighth year of the BISSNET scholarship program

Buffalo Alliance for Education Inc. \$90,000
support the "Targeted Training and Speakers" program (3 years)

Buffalo Prep \$450,000
support the expansion of the "Rising to Distinction" program (3 years)

Catholic Central School \$166,000
support the "Nativity Model", a summer camp component in collaboration with Christ the King Seminary (2 years)

Community Foundation for Greater Buffalo

- *support the 2005-2006 college scholarship program* \$150,000
- *support GoodSchools for All Phase I city-wide literacy campaign* \$150,000

Computers for Children, Inc. \$250,000
support to develop a program based on current computer technology and training of children

The Education Partnership \$100,000
support a study of public school management issues

EPIC \$300,000
support "Ready, Set, Parent" at Women and Children's Hospital of Buffalo (3 years)

Leadership Buffalo Inc. \$10,000
support participant subsidies for the Leadership Buffalo Class Experience 2006 Scholarship Flagship Program

Old First Ward Community Center \$10,000
support the pilot Supplemental Educational Services program

Trocaire College <i>support the Health Careers Enhancement project</i>	\$504,000 (4 years)
The Charter School for Applied Technologies <i>support the formalization and staffing of the WNY Charter School Network</i>	\$175,000 (2 years)
Total Education	\$3,660,142

Human Services

American Red Cross-Greater Buffalo Chapter	
<ul style="list-style-type: none"> • <i>support the Family Caregiving Outreach and Education initiative in collaboration with WNED</i> • <i>reimbursement for direct emergency assistance provided to victims of hurricanes Katrina/Rita locally</i> 	\$600,000 (3 years) \$70,000
Baker Victory Services <i>support a skill enhancement program and a mentoring program</i>	\$66,125 (3 years)
Buffalo City Mission	
<ul style="list-style-type: none"> • <i>support Cornerstone Manor's organizational, educational and program expansion at their new facility</i> • <i>support basic human needs</i> 	\$500,000 (3 years) \$50,000
Buffalo Therapeutic Riding Center <i>support therapeutic riding programs</i>	\$5,000
Buffalo Urban League, Inc. <i>reimbursement for direct emergency assistance provided to victims of hurricanes Katrina/Rita locally</i>	\$10,000
Care Management Coalition of WNY <i>support an update of the Coalition's strategic plan due to process changes and budget cuts at Erie County</i>	\$15,000
Child & Family Services of Erie County	
<ul style="list-style-type: none"> • <i>support the Volunteer Return Preparer program on behalf of the Self Sufficiency Coalition</i> • <i>support basic human needs of Conner Children's Center</i> 	\$450,000 (3 years) \$10,000
The Child Care Coalition of the Niagara Frontier, Inc. <i>support the Early Childhood Education and Economic Development study</i>	\$22,340

Compass House	\$190,000
<i>support Project Safe Place within Erie County</i>	(3 years)
The Early Childhood Center at Roswell Park	\$75,000
<i>support the Early Childhood's Center's move to St. John Baptist Church</i>	
Excalibur Leisure Skills Center, Inc.	\$8,000
<i>support a new wheelchair accessible program vessel</i>	
Family & Children's Service of Niagara, Inc.	\$50,000
<i>support basic human needs of Passage House</i>	
Food Bank of WNY	\$50,000
<i>support basic human needs</i>	
The Franciscan Center Inc.	\$25,000
<i>support basic human needs</i>	
Friends of the Night People Inc.	\$50,000
<i>support basic human needs</i>	
Goodwill Industries of WNY, Inc.	\$50,000
<i>support basic human needs</i>	
Healthy Community Alliance, Inc.	\$20,000
<i>support to assume the teen counseling program from L.K. Painter Community Center</i>	
Heart, Love & Soul, Inc.	\$25,000
<i>support basic human needs</i>	
Hearts & Hands: Faith in Action	\$25,000
<i>support basic human needs</i>	
Heritage Centers, Inc.	\$180,000
<i>support the cultural enrichment program approved as an "Advantage After School" program by the Office of Child and Family Services</i>	(3 years)
Hispanics United of Buffalo Inc.	\$25,000
<i>support basic human needs</i>	
Joan A. Male Family Support Center	
• <i>support basic human needs</i>	\$50,000
• <i>support a strategic planner</i>	\$10,000

Kevin Guest House <i>support basic human needs</i>	\$25,000
Polish Community Center (Lt. Col Matt Urban Human Svcs. Ctr. of WNY) <i>support basic human needs</i>	\$25,000
Little Portion Friary <i>support basic human needs</i>	\$25,000
Massachusetts Avenue Project Inc. <i>support a rebuilding program after the August 2005 fire</i>	\$20,000
Native American Community Services of Erie & Niagara Counties, Inc. <i>support basic human needs</i>	\$25,000
New Directions Youth & Family Services, Inc. <i>support basic human needs of the "Residency Programs"</i>	\$50,000
Opportunities Unlimited of Niagara Foundation, Inc. <i>support the Technology to Improve Service Delivery project</i>	\$250,000
St. Adalbert's Basilica <i>support basic human needs through their Response to Love Center</i>	\$50,000
Sisters of Mercy of the Americas	
• <i>support basic human needs of the Perry Projects</i>	\$25,000
• <i>support basic human needs through "Helping Hearts Kid's Club"</i>	\$25,000
United Way of Buffalo & Erie County <i>support the continuation of Phase III of Community Connect (match grant)</i>	\$50,000
WNY Foundation for Homes & Services for the Aging <i>support the web-based "Senior Care Assessment Tool"</i>	\$60,000
YMCA of Greater Buffalo <i>support the merger of Niagara Falls YMCA and YMCA of Greater Buffalo</i>	\$150,000
YWCA of Niagara <i>support job training and social service programs for low income and homeless women and children in "Carolyn's House"</i>	\$182,000 (2 years)
Total Human Services	\$3,593,465

Medical Research & Healthcare

Buffalo Federation of Neighborhood Centers, Inc.	\$38,000
<i>support a third year of "Take a Loved One to the Doctor" by the Near East Side Healthcare Task Force</i>	
The Buffalo Niagara Medical Campus	
<ul style="list-style-type: none"> • <i>support the infrastructure development efforts leading to sustainable revenue sources</i> • <i>support the acquisition of land and buildings at 929-945 Washington Street through a program related investment</i> 	\$100,000 \$200,000
BuffLink, Inc.	\$125,000
<i>support a new Commercialization Accelerations Program (CAP) for Life Sciences in WNY</i>	
Catholic Health System Inc.	\$1,500,000
<i>support the Our Lady of Victory Senior Neighborhood Program of All-Inclusive Care for the Elderly (PACE) project in Lackawanna</i>	
Niagara Hospice, Inc.	\$300,000
<i>support the establishment of a new Niagara Hospice House located in Lockport, NY</i>	
Niagara Lutheran Home Foundation Inc.	\$150,000
<i>support "People First: Recruitment, Training, and Retention of the Caregiver" program</i>	
Planned Parenthood of Buffalo & Erie County	\$205,000
<i>support to upgrade and expand services provided to underserved areas by the Mobil Outreach Unit</i>	
Roswell Park Alliance Foundation	\$212,000
<i>support the development of an NMR-based metabonomic approach for diagnosing ovarian cancer</i>	
The University at Buffalo Foundation, Inc.	
<ul style="list-style-type: none"> • <i>support research entitled "Understanding the biology of a novel human immunosuppressive protein and its application to the treatment of human disease"</i> • <i>support the implementation of the Classroom Learning and School Success (CLASS) Program</i> • <i>support research at the Center for Unified Biometrics and Sensors (CUBS)</i> • <i>support a comprehensive study on eating disorders in WNY</i> 	\$172,500 \$230,650 \$400,000 \$30,000

Women and Children's Hospital Foundation of Buffalo

- *support the establishment of a Counseling Program by the Tourette Syndrome Association of WNY in collaboration with Women and Children's Hospital and Enterprise Charter School* \$68,000
- *support the "Stone's Buddies" program in honor of a former Oishei Foundation board member, Richard D. Fors* \$50,000

Total Medical Research/Healthcare \$3,781,150

Total 2005 Grants \$13,789,957

MISSION STATEMENT

The Foundation's mission is to enhance the quality of life for Buffalo area residents by supporting education, healthcare, scientific research, and the cultural, social, civic and other charitable needs of the community.

Board of Directors

James M. Wadsworth
(Chair)

Mary S. Martino
(Vice Chair)

Thomas E. Baker
(President)

Allan R. Wiegley
(Treasurer)

Robert M. Bennett
Ruth D. Bryant
Clotilde Perez-Bode Dedecker
Christopher T. Dunstan
Erland E. Kailbourne

Staff

Thomas E. Baker
President
tebaker@oisheifdt.org

Paul T. Hogan
Senior Program Officer
pthogan@oisheifdt.org

Blythe T. Merrill
Program Officer
btmerrill@oisheifdt.org

Gayle L. Houck
Executive Assistant;
Secretary to the
Board of Directors
glhouck@oisheifdt.org

For information on applying to the Foundation,
please visit our website:
www.oisheifdt.org
or contact us at (716) 856-9490.

Letters of Inquiry should be addressed to
Thomas E. Baker, President
The John R. Oishei Foundation
One HSBC Center, Suite 3650
Buffalo, NY 14203